



Mining

Moho touches down at Cathedrals, Australia's most remarkable nickel province

October 30, 2019 | [Special Report](#)

SHARE    

***Special Report:* St George Mining is enjoying wild exploration success at the “bizarre” Cathedrals Belt in WA. Now, fellow explorer Moho has grasped the opportunity to get in on the ground floor of this emerging nickel province.**

St George (ASX:SQG) has now intersected shallow, high-grade nickel and copper sulphides across a 5.5km section of its 16km-long Cathedrals Belt project in WA.

This isn't just a major new discovery. This is very, very unique mineralisation in a unique geological setting.

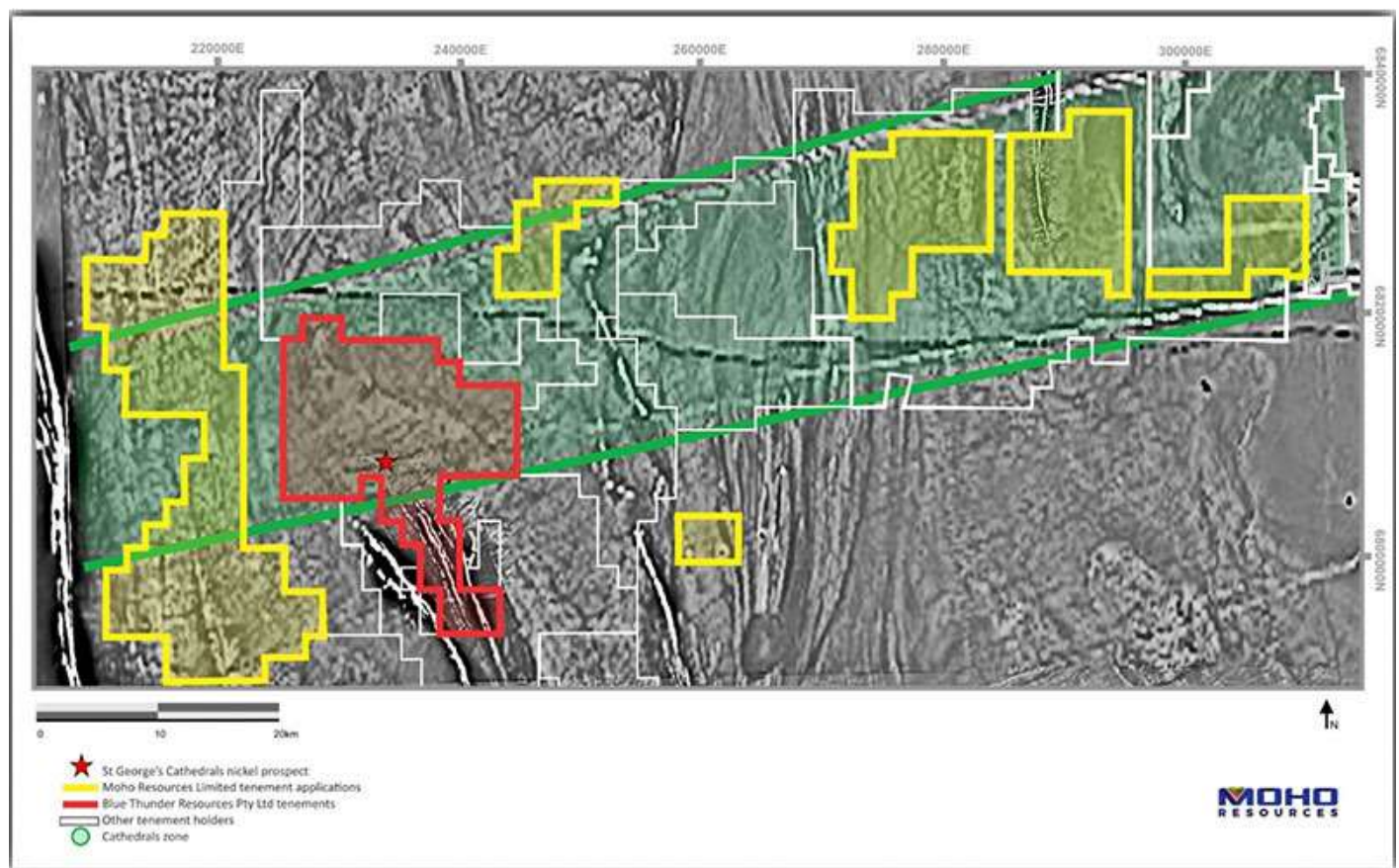
That's because most of the ultramafic belts in the Yilgarn which have nickel sulphides are north-northwest trending. But Cathedrals runs *east to west* and seems to mimic the much younger and unmineralised Proterozoic dykes.

Even stranger – St George says that every electromagnetic (EM) conductor it picks up in the belt ends up being nickel sulphide mineralisation.

“100 per cent hit rate,” St George's John Prineas says. “In any other belt you will probably get an almost 99.9 per cent failure rate.”

Regional activity is naturally picking up.

Now **Moho (ASX:MOH)** – chaired by the legendary Terry Streeter – has made a move into the area, last month applying for a number of highly prospective tenements.



Because these tenement applications take time to be processed, Moho is also in discussions with a couple of parties to potentially acquire 'live' tenements, Moho's Ralph Winter told *Stockhead*.

“Our hope is that in the not too distant future we can secure something and then start working on the ground straight away,” he says.

But this isn't a simple nearology play. **Moho's talent stacked board** is constantly reviewing new gold and nickel opportunities as part of its internal processes.

Moho is chaired by Terry Streeter, who has a record of success in the WA nickel sector with companies such as Jubilee Mines and Western Areas.

READ: Moho chairman Terry Streeter on his possible nickel hattrick

The team is also supported by a number of consultants including world-renowned geologist Dr Jon Hronsky, who was responsible for the discovery of the Nebo-Babel deposits in WA – considered to be the largest nickel-sulphide find since 1993.

Winter says the Moho team had studied the Cathedrals area extensively before making its move.

“St George’s discovery was a paradigm shift for nickel exploration, and it piqued our interest,” he says.

“We had a chat with Dr Jon Hronsky, who has already done some work on our **Empress Springs project** and, coincidentally, with St George a few years ago. He was familiar with the belt and the concepts around it.

“We regard his opinion highly. He gave us a bit of a rundown, with their blessing, on the work he had done with St George.”

Hronsky focused on the prospective regional geology. Moho also asked experienced consultant geochemist Richard Carver and geologist “Rocky” Osborne to review historical geological reports and exploration results over the belt to pinpoint a few key areas.

“We wanted to dial in on the most prospective available areas along this belt,” Winter says.

“We are hoping to get out on the ground, have a better look – do some early geophysics work similar to what St George has done – and potentially look at replicating that discovery,” Winter says.

NOW READ: Moho makes shrewd investment in WA nickel play St George



This story was developed in collaboration with Moho Resources, a Stockhead advertiser at the time of publishing.

This story does not constitute financial product advice. You should consider obtaining independent advice before making any financial decisions.

- Subscribe to our **daily newsletter**
- Join our small cap **Facebook group**
- Follow us on **Facebook** or **Twitter**

SHARE





Hear it first with our daily newsletter.

Full name

Email address

SUBSCRIBE

We don't spam. Read our [privacy policy](#).

MORE FROM STOCKHEAD



Dr Boreham's Crucible:
PainChek on a painless path to
success;...
03 Nov



Stock valuations are surging
as medtech embraces SAAS
27 Oct



These are the 22 small cap
biotechs closest to bringing a
drug to...
03 Nov



This small cap wants to
capitalise on China's protein
shortage by...
29 Oct

SPONSORED FINANCIAL CONTENT



If you invested \$10K in these
Investors here's how much you
have today
(eToro)



Why Did No One Tell Us About
This Life Insurance Trick
(Life Insurance Comparison)



WhatsApp hack led to targeting
of 100 journalists and dissidents
(Financial Times)



This Resource Bet Could Make
the Lithium Bonanza Look Tiny
(Money Morning)

dianomi

ABOUT US

MEET THE TEAM

CONTACT US

ADVERTISE

**Stockhead is providing factual information where there is a reasonable likelihood of doubt.
The information is not intended to imply any recommendation or opinion about a financial product.**

[Terms of use](#)

[Privacy Policy](#)

Copyright 2019